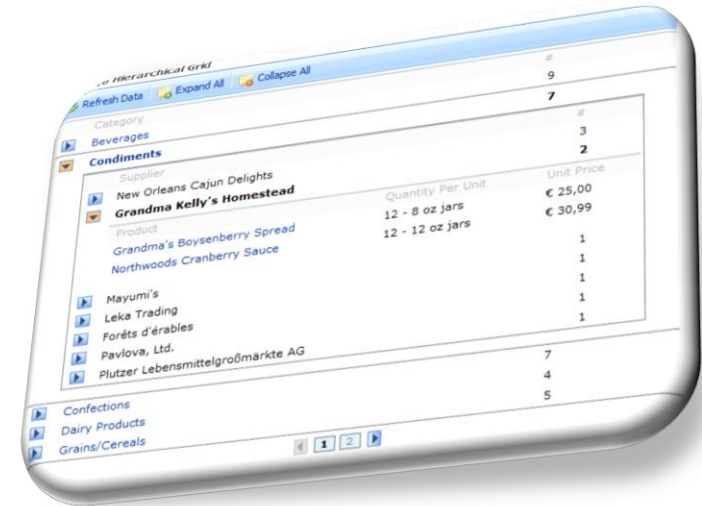





JoinPro

for SharePoint



A powerful tool to merge and relate data from different Microsoft SharePoint lists



INDICE

WICE SharePoint Solutions

<http://sharepoint.wice-group.com>

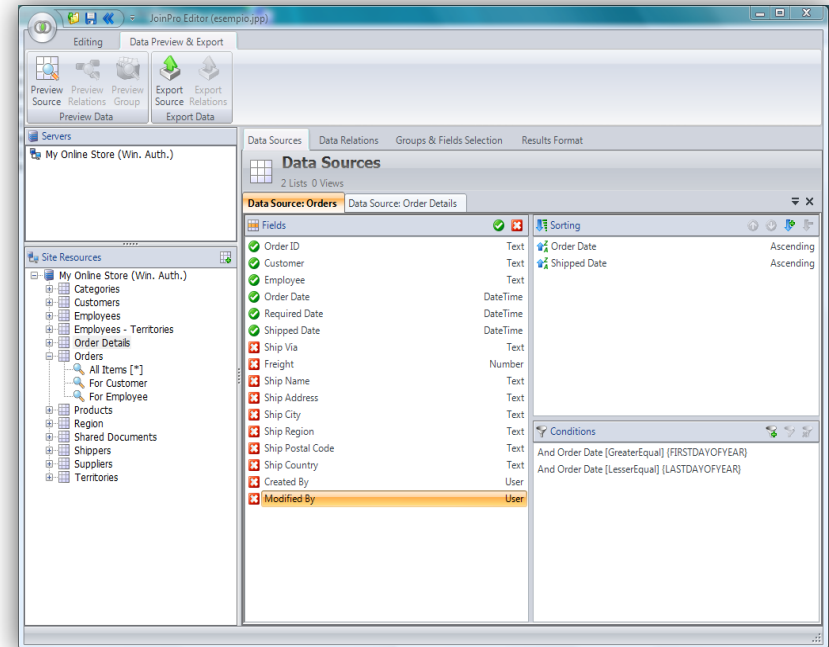
Area Information Technology - Fiscal Year 2008/2009

- ▶ Overview
- ▶ Features
- ▶ Benefits
- ▶ Goals



WICE JoinPro is WICE Group’s innovative solution that supplements SharePoint functions with an effective **tool for analysis enabling quick access in just one view to information from a range of data sources**, which is crucial for decision making at all levels in daily tasks.

JoinPro aims at becoming an irreplaceable tool for the increasing number of companies that currently use Microsoft SharePoint (WSS 3.0 or MOSS 2007) providing a solution to create a central point to access, manage, and share a variety of information, files and applications.



JoinPro offers a **real possibility to relate SharePoint information and data**, allowing to **handle lists as if they were tables in a relational database** and, consequently, to create multiple *joins*.

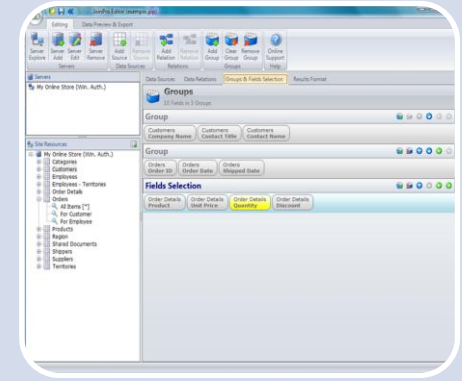
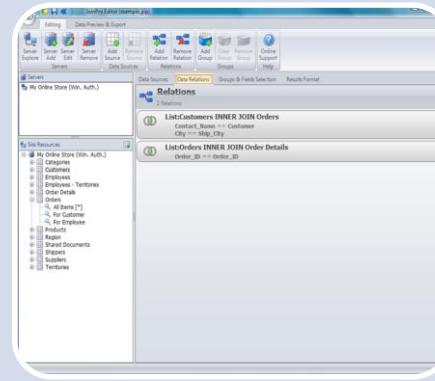
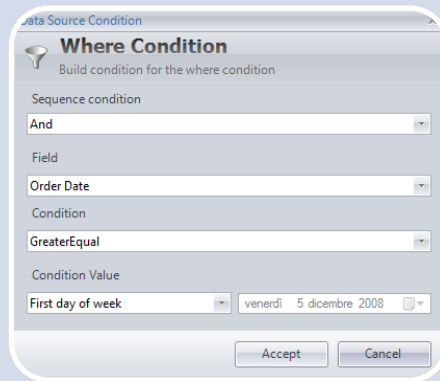
JoinPro is, indeed, able to select, group, sort and display - in just one table – information from multi-site and multi-server data sources, related by a potentially endless number of fields.



- ▶ Overview
- ▶ Features
- ▶ Benefits
- ▶ Goals

JoinPro consists of an editor (to set relations, choose lists, etc.) plus a WebPart, also available in the package, to display selected data. The data structures created through the editor can be exported to CSV or Excel to make them available to end users.

Here are just some of the main JoinPro functions:



Selection of SharePoint lists (from different sites and servers).

Sorting and filtering options according to the desired settings

Setting of grouping and selection options for an easy display of all requested data

Setting of relations among multiple lists according to endless parameters, using all types of JOINS (inner, full, left, right)



INDICE

- ▶ Overview
- ▶ Features
- ▶ Benefits
- ▶ Goals

JoinPro offers a number of benefits at all levels

Within companies of any size, **IT departments** will be able to **best fulfill user needs**, through the extremely simple creation of customized views gathering information from different SharePoint lists.

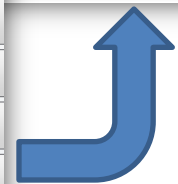
Through the WebPart, **end users** – e.g. top as well as operations managers - will easily make use of those data which are useful for their working tasks, handling them in Excel or CSV format, turning them into charts, converting them to pdf files or printing them.

Lastly, **developers** will enjoy the advantages of JoinPro when creating even the most complex SharePoint sites or special views to display related data from different lists in an extremely simple manner.

Order ID	Order Date	Shipped Date	Product	Unit Price	Quantity	Discount
Order 10308	18/09/1996	24/09/1996	Camembert Pierrot	€ 34,00	10	0%
Order 10625	08/08/1997	14/08/1997	Singaporean Hokkien Fried Mee	€ 14,00	5	0%
			Tofu	€ 23,25	3	0%
Order 10759	28/11/1997	12/12/1997				
Order 10926	04/03/1998	11/03/1998				

Relations
4 Relations

- List:Customers FULL JOIN Orders
Contact_Name == Customer
- List:Order Details RIGHT JOIN Orders
Order_ID == Order_ID
- List:Products LEFT JOIN Order Details
Product == Product
- List:Categories INNER JOIN Products
Category == Category



- ▶ Overview
- ▶ Features
- ▶ Benefits
- ▶ Goals



The simple, intuitive JoinPro interface provides for a simplified management of queries, enabling users to check all parameters and options, and, if need be, change them with a few clicks. Thus, users can select from the relevant SharePoint lists the data they need to get new, always effective pictures.

For example, starting from information contained in a “Customer List”, a “Product List” and an “Order list” scattered over different SharePoint sites or servers, IT departments – thanks to JoinPro – will easily set the parameters to turn collected data into useful, concrete information to be displayed.

Hence, **end users** (like sales directors, sales staff members, logistics personnel and so on) will always have freshly updated data on order status sorted by customer, product or any other parameter without wasting time to search for them. Data can be displayed through the WebPart or exported to Excel according to need, to draw up reports or charts to be shown to supervisors or managers or devise new strategic actions.

JoinPro Hierarchical Grid

Refresh Data Expand All Collapse All

Category	#
Beverages	9
Condiments	7
Supplier	
New Orleans Cajun Delights	3
Grandma Kelly's Homestead	2
Product	
Grandma's Boysenberry Spread	12 - 8 oz jars € 25,00
Northwoods Cranberry Sauce	12 - 12 oz jars € 30,99
Mayumi's	1
Leka Trading	1
Forêts d'érables	1
Pavlova, Ltd.	1
Plutzer Lebensmittelgroßmärkte AG	1
Confections	7
Dairy Products	4
Grains/Cereals	5



INDICE

- » Overview
- » Features
- » Benefits
- » Goals